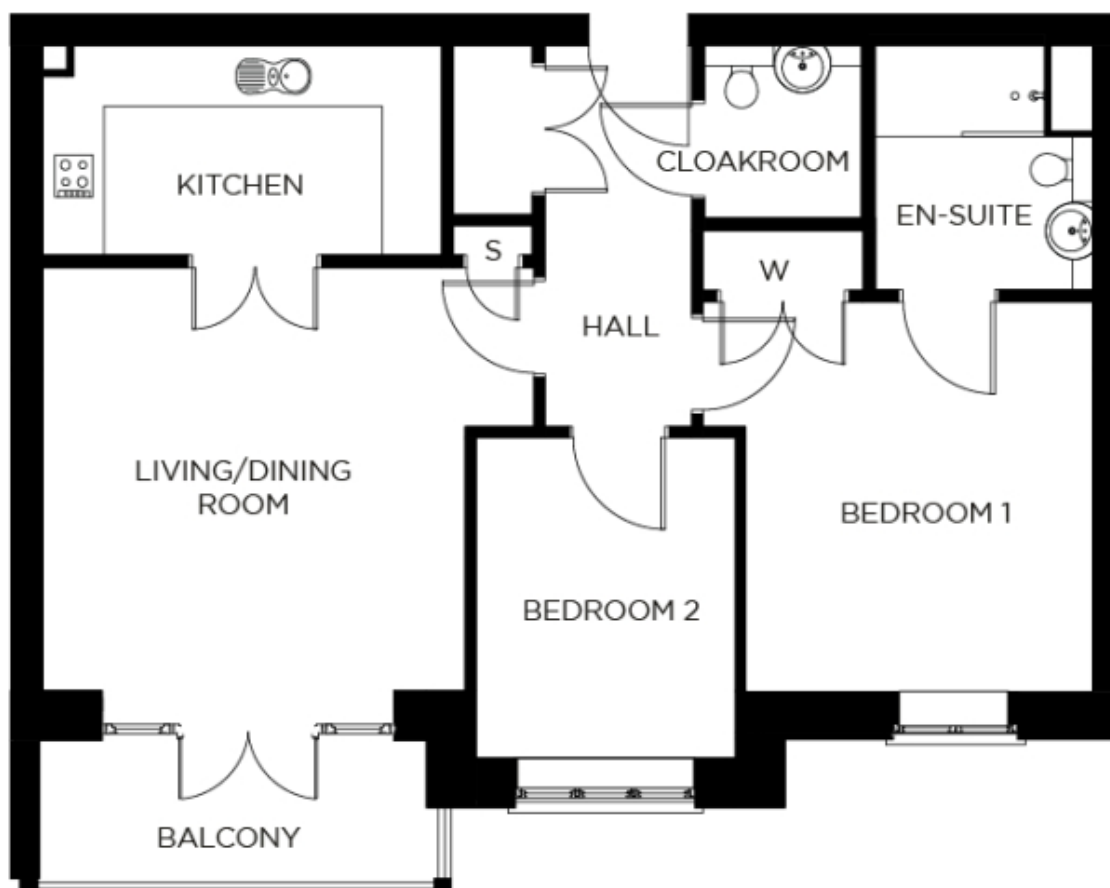


44 Burchmore House

A beautiful modern home



Price: £POA*, First floor

Our spacious one and two-bedroom retirement living apartments offer the perfect balance of style and function, centrally located to ensure easy access to our village facilities.

* other charges apply

Internal measurements: 759sq ft

Kitchen	13' 2" x 7' 0"	4,000 x 2,120mm
Living/Dining Room	16' 4" x 14' 0"	4,970 x 4,250mm
Bedroom 1	12' 11" x 12' 11"	3,930 x 3,920mm
Ensuite	8' 1" x 7' 2"	2,450 x 2,180mm
Bedroom 2	10' 8" x 8' 8"	3,230 x 2,620mm
Cloakroom	5' 8" x 5' 3"	1,720 x 1,600mm

