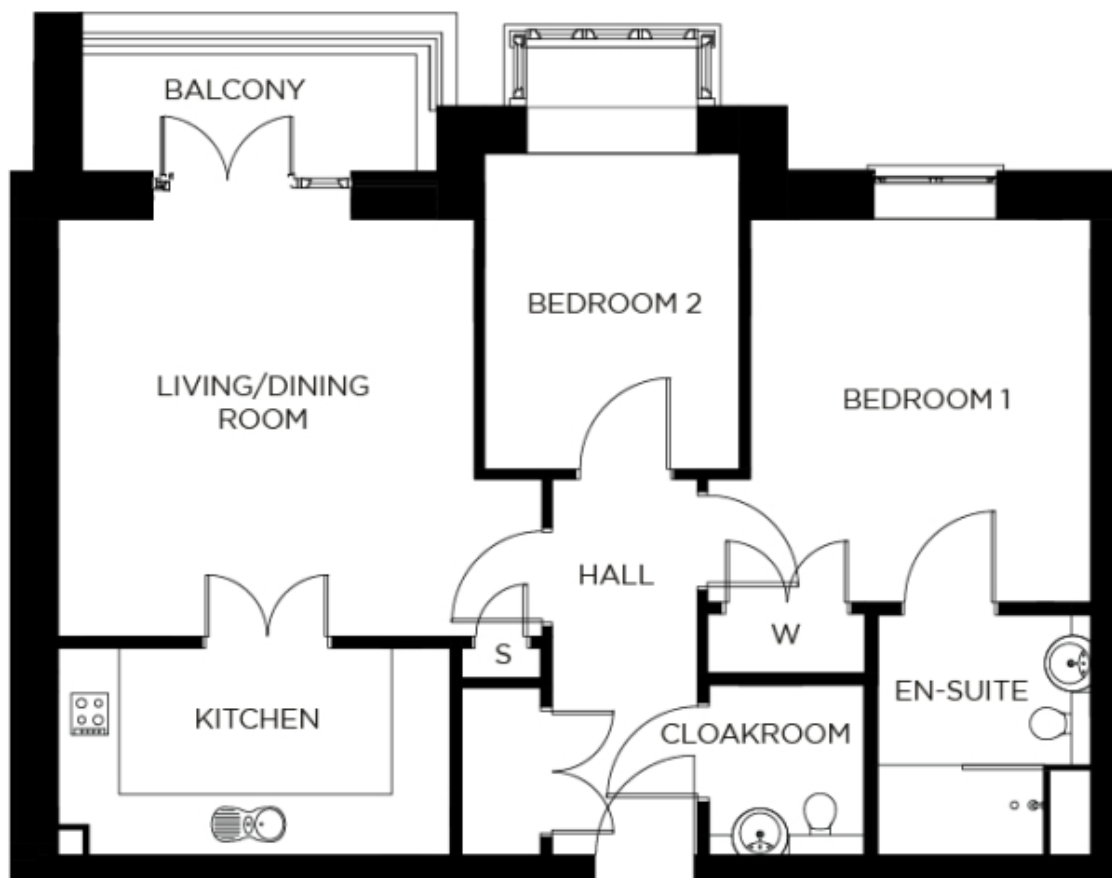


46 Burchmore House

A beautiful modern home



Price: £POA*, First floor

Our spacious one and two-bedroom retirement living apartments offer the perfect balance of style and function, centrally located to ensure easy access to our village facilities.

* other charges apply

Internal measurements: 760sq ft

| | | |
|--------------------|-------------------|-----------------|
| Kitchen | 13' 2" x 7' 0" | 4,000 x 2,120mm |
| Living/Dining Room | 16' 4" x 14' 0" | 4,970 x 4,250mm |
| Bedroom 1 | 12' 11" x 12' 10" | 3,930 x 3,910mm |
| Ensuite | 8' 1" x 7' 2" | 2,450 x 2,180mm |
| Bedroom 2 | 10' 8" x 8' 8" | 3,230 x 2,620mm |
| Cloakroom | 5' 8" x 5' 3" | 1,720 x 1,600mm |

