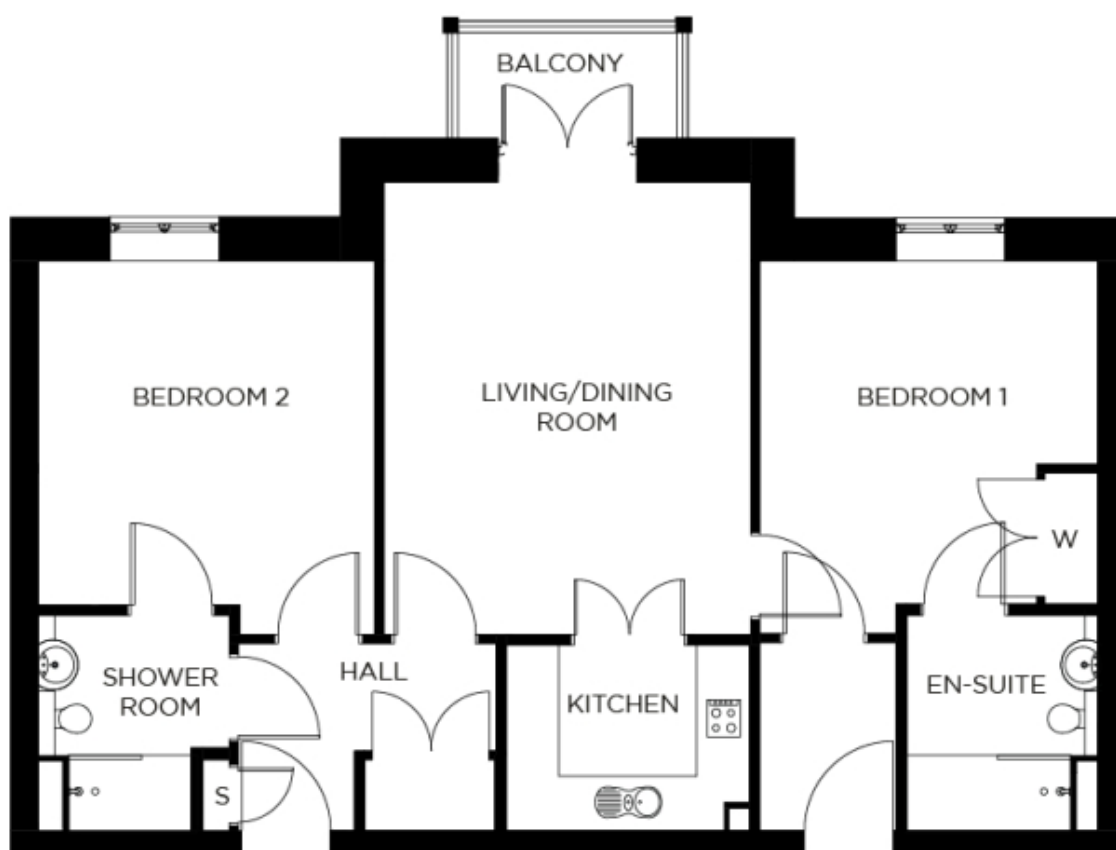


# 59 Burchmore House

A beautiful modern home



## Price: £POA\*, Second floor floor

Our spacious one and two-bedroom retirement living apartments offer the perfect balance of style and function, centrally located to ensure easy access to our village facilities.

\* other charges apply

## Internal measurements: 888sq ft

Kitchen	9' 2" x 7' 0"	2,780 x 2,120mm
Living/Dining Room	16' 11" x 13' 9"	5,150 x 4,190mm
Bedroom 1	14' 0" x 12' 8"	4,250 x 3,860mm
Ensuite	8' 1" x 7' 2"	2,450 x 2,180mm
Bedroom 2	14' 0" x 12' 8"	4,250 x 3,850mm
Shower room	8' 1" x 7' 2"	2,450 x 2,180mm

